



## Flexible Resourcing

Keep your operations on track with

# XMA Flexible Resourcing



Powered By



**Lucid**  
Support



# XMA are proud partners with Lucid for all your core IT resourcing needs

In today's busy environment, many parts of a project need to run smoothly to maximise successful outcomes. One delay can quickly snowball into tighter deadlines and rushed quality.

At XMA, we believe that when resourcing becomes a sudden bottleneck in project roadmaps, it doesn't need to be a headache. That's why for everything core resourcing, we've partnered with the very best. We've partnered with Lucid.

Since 2017, our partnership with Lucid has been centred on providing our customers with a Flexible Resourcing – Core Service. This service involves supplying specific, skilled professionals for short-term roles within customer projects.

Our customers maintain full in-house authority over the management and supervision of the resources, orchestrating the activities of the professionals as they see fit for the required duration.

- **24-hour turnaround**
- **Flexible service, tailored to your needs**
- **Dedicated and responsive account management**

We work tirelessly to understand your organisation and its operational needs.



## Core Resources:

Engineers  
Developers  
Technicians  
Analysts



**Temporary Assignments**



**Specialised Skills**



**Flexibility**



**Speed of Hiring**



**Cost-Effectiveness**



# First-in-class, at your fingertips

We collaborate exclusively with high-calibre certified IT engineers, developers, technicians analysts and more. Our active relationships with an extensive pool of qualified IT professionals means we're equipped to onboard skilled individuals and teams to your business at pace.

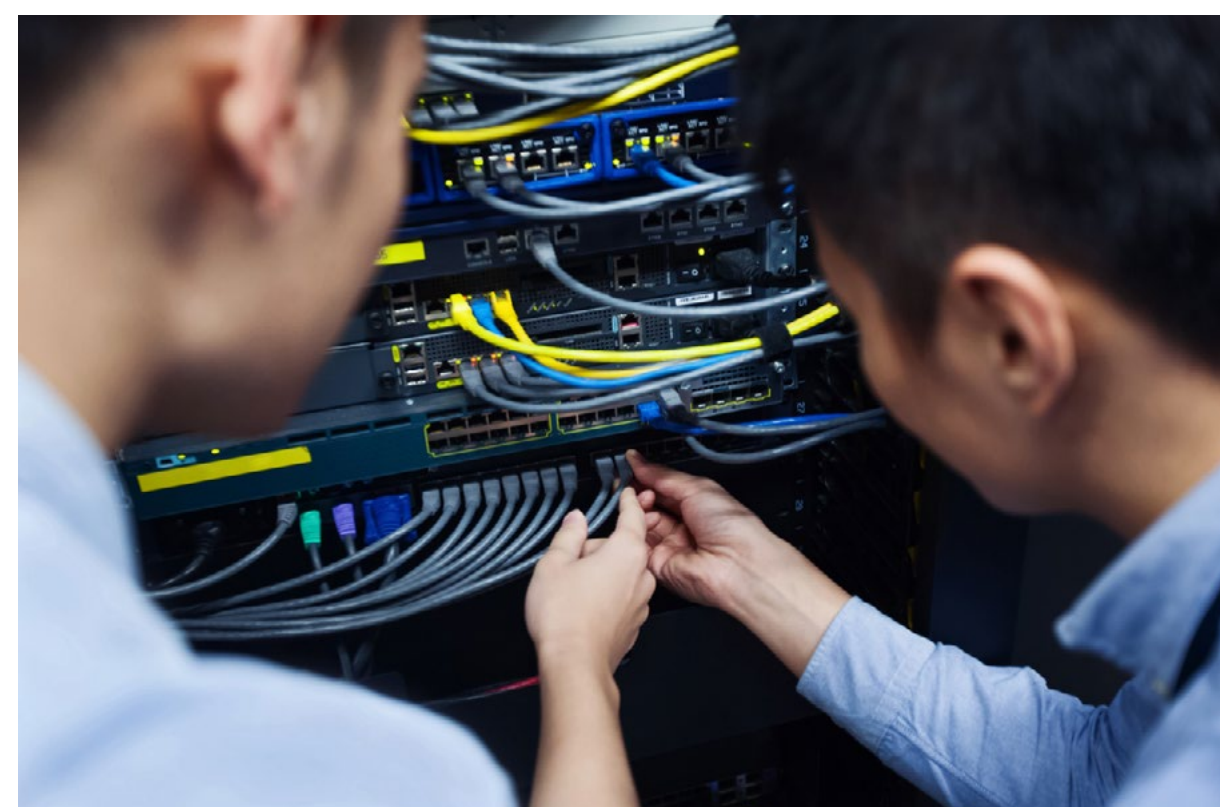
## Our specialists are:

- Certified to current industry standards
- Thoroughly vetted
- Pre-screened

Our proactive approach and comprehensive recruitment, vetting and onboarding process allows us to be completely confident about placing the right skills and expertise to

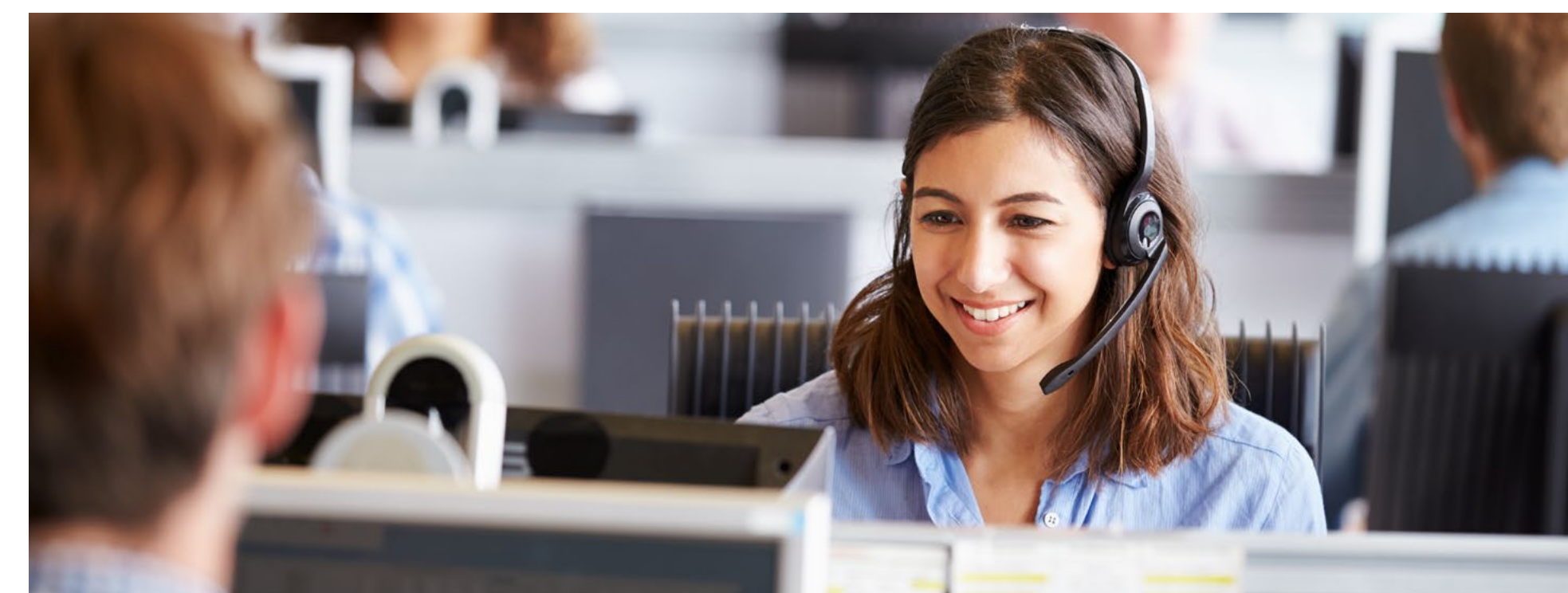
complement and enhance your technical and cultural environment.

We offer a 24-hour turnaround for assignments, and our hands on, committed approach ensures all of your IT requirements are met with ease, expertise and zero delay.



## Together with Lucid, we are:

- ISO9001, ISO27001 & ISO14001 Certified
- ARC Gold Members
- Crown Commercial Services Approved
- Disability Confident
- G-Cloud and DOS5
- SVQM Bronze





# XMA Flexible Resourcing



## Core

Offers comprehensive capabilities, for all your core resourcing needs

### Technology Infrastructure

Network Engineer  
Systems Administrator  
EUC & Voice Analyst  
IT Service Support Analyst  
Cloud Engineer

### Application Development

Web Developer  
Front End Developer  
Full Stack Engineer  
Back End Developer

### Data Engineering & Analytics

Data Engineer  
Data Analyst  
Business Analyst

### Information & Cyber Security

Cyber Security Technician  
Information Security Technician  
Security Operations Centre (SOC) Analyst  
Audit Manager

### Service Management

Service Desk Analyst  
Problem Analyst  
Problem Manager  
Incident Analyst  
Incident Manager

### Experience Design

Service Designer  
UX Designer  
UX Analyst

### Testing

Tester  
Test Analyst  
Test Automation Analyst

### Project Delivery

Programme Manager  
Project Manager  
Project Analyst

### Workforce Management

Resource Manager  
Resource Analyst

### IT Finance & Procurement

Finance Manager  
Finance Analyst  
Procurement Manager  
Contract Manager

## Sample Technologies

- .Net
- Active Directory
- AdminStudio
- AIX
- Altiris
- Android
- AngularJS
- Apache
- AppDNA
- Apple
- AppV
- AWS
- Azure
- C/C++
- C#
- Cisco
- Citrix
- Confluence
- Crystal Reports
- CSS
- D365
- Dell
- Docker
- Dynamics
- Exchange
- Fujitsu
- GCP
- GO
- Hadoop
- HP
- HTML
- Intune
- iOS
- Java
- JavaScript
- Jira
- Kubernetes
- Lenovo
- Linux
- LogicMonitor
- Monday.com
- MS Project
- MSI
- MSIX
- N-Able
- Netbackup
- Objective-C
- Office 365
- Oracle
- Perl
- PowerBI
- PowerShell/VB
- Python
- QAD
- React
- Ruby
- Sage
- Salesforce
- SAP
- SCCM
- ServiceDesk+
- ServiceNow
- SharePoint
- Solaris
- SolarWinds
- Spark
- SQL
- Swift
- Terraform
- Ubuntu
- Unix
- VMware
- WebGL
- Win Server



## Innovate

Boost your competitive advantage with our Customer Success, Professional and Managed Services, visit:

- [www.xma.co.uk/smart-solutions](http://www.xma.co.uk/smart-solutions)
- [www.xma.co.uk/smart-services](http://www.xma.co.uk/smart-services)





# Case study: Government Agency

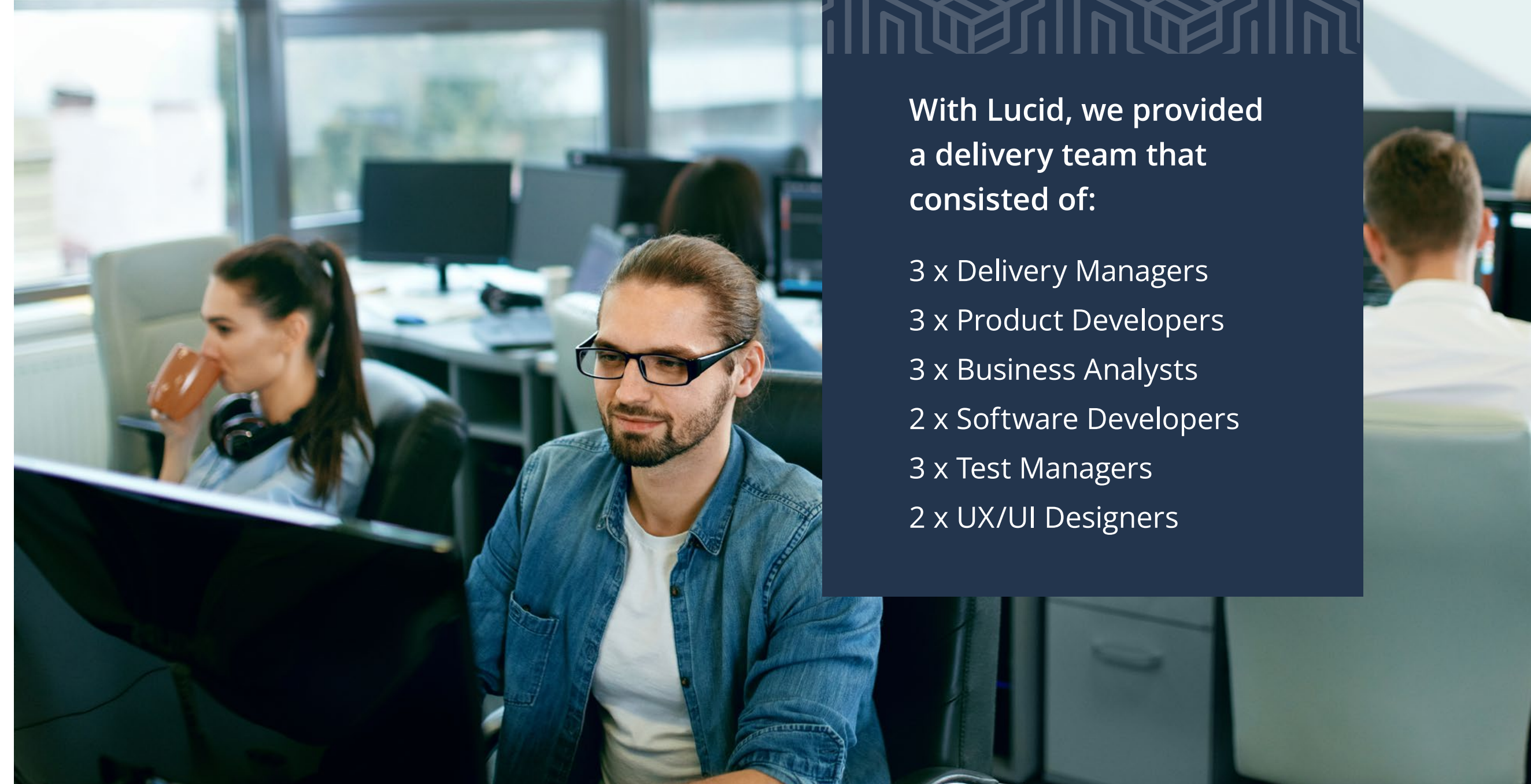
Design, testing and launch of a new cross Government IT platform

## Challenge

One of the most complex programmes we have worked on was the requirement to provide resources to deliver the implementation of new major secure platform. The Platform was a central government IT system that enables collaborative working across departments in a secure environment, with the latest digital and data technologies. XMA and Lucid were required to source technical resources that had a wide range of technical capabilities, while also having specific experience working in the public sector within secure government departments. Our Flex resourcing lead worked closely with the customer to identify suitable candidates and worked quickly and collaboratively, to meet the customers aggressive timelines.

## Outcome

The customer required XMA & Lucid to form a technical team of 16 specialists to deliver this specific programme, which the customer managed internally, aligning them to their existing project team. We continued to work with the customer throughout the project to meet their diverse range of technical requirements. The customer needed us to flex up or down depending on the changing requirements and our Flex Resourcing model provided peace of mind that the right resources were in the right place at the right time. This provided extensive confidence to the customer and established a new internal way of working for Flexible Resourcing in the future.



With Lucid, we provided a delivery team that consisted of:

- 3 x Delivery Managers
- 3 x Product Developers
- 3 x Business Analysts
- 2 x Software Developers
- 3 x Test Managers
- 2 x UX/UI Designers

## In addition, Lucid provided the following value-added benefits:

- Provision of experts in Agile methodology with proven track records in successful delivery of complex projects.
- Working with high profile, and senior stakeholders from senior users and public representatives to board members and Ministers.
- Leadership and working management of multi supplier, multi discipline teams.
- Identification of specialist resources SC/DV cleared. SLA response 48 hours.
- SOW development, monitoring, tracking, reporting and remedy management.
- Supporting the processing & transferring of Security Clearance.
- IR35 Service Determination Status (SDS) guidance.
- Resource Management.
- Technical vetting and verification.
- Knowledge transfer and upskilling existing.
- Provisions of quality, reusable documentation.

# Why XMA?



## Homegrown

We are a private, family run UK-based business.



## Award-winning

We are a national award-winning IT reseller.



## Public sector approved

We hold status on 25+ procurement frameworks.

[VIEW OUR FRAMEWORKS](#)



## Right-sized

We can provide and tailor service solutions for any size project, while maintaining a personal experience for every customer.



## Established

We have served thousands of customers over 35+ years in business.



## Partner accredited

We have an unrivalled partner accreditation portfolio that means customers have access to best-in-class solutions, always.

**Get in touch to discuss your core resourcing needs.**

Call us on: **01156 950 816**

or send an email to:

**[flex.resourcing@xma.co.uk](mailto:flex.resourcing@xma.co.uk)**



## Innovate

**Boost your competitive advantage with our Customer Success, Professional and Managed Services, visit:**

[www.xma.co.uk/smart-solutions](http://www.xma.co.uk/smart-solutions)

[www.xma.co.uk/smart-services](http://www.xma.co.uk/smart-services)

Crown  
Commercial  
Service  
Supplier

**INVESTORS IN PEOPLE**  
We invest in people Standard

